

SLS Series

SportsLiter Solutions

SPORTSLIGHTING



SLS series Sportsliter luminaires are ideally suited for recreational, collegiate and professional sporting events where quality levels of illumination and uniformity are required. They are equally suited for large open areas such as parking lots, storage areas and transfer yards.

- Die-cast aluminum housing
- Isolated ballast compartment
- Stainless steel lens ring; Silicone gasketing
- Filtered optics; Built-in lamp support
- Mounting hardware included
- Isolated wiring chamber
- Hubbell Gard™ treated hardware
- Lektrocote® polyester powder paint
- Horizontal and vertical aiming indicators
- 2.8 EPA
- Fast Aim™ system; Repositioning stop
- Thermal shock, impact resistant tempered lens
- Stainless steel hinge and latches
- Aiming sights included
- Environmental spill/glare control optional
- Remote ballast system available
- UL listed and CSA certified
- 40° C ambient operation

ORDERING INFORMATION

SLS							
SERIES	WATTAGE/SOURCE	BALLAST TYPE	BEAM DISTRIBUTION			VOLTAGE	GENERAL OPTIONS
SLS SportsLiter Series	1000H 1000w MH 1500H 1500w MH 1000S 1000w HPS 0875P^{13,14} 875w PSMH	0² No ballast (remote head only) 1 HPF regulated, peak lead auto, CWA, auto regulated	2 NEMA Type 2 3¹² NEMA Type 3 4 NEMA Type 4 5 NEMA Type 5 6 NEMA Type 6 N^{8,9} Narrow beam horizontal lamp M^{8,9} Medium beam horizontal lamp W^{8,9} Wide beam horizontal lamp	5 480V 6 Tri-Tap® (120, 277, 347V) 7¹ 600V 8 Quad Tap® (120, 208, 240, 277V) 0² No ballast (remote head only) E³ 220/240V, 50 Hz	3CXX^{4,11} 3' Prewired SEOWA cord (specify voltage) 6CXX^{4,11} 6' Prewired SEOWA cord (specify voltage) 12CXX^{4,11} 12' Prewired SEOWA cord (specify voltage) F(X)⁵ Fusing: replace X with 2-208V, 3-240V, 4-277V, 5-480V, 6-347V (fuses incl., externally mtd.) PH⁶ Protective heavy-duty outer hull L Unit with lamp (shipped separately) SG⁷ Spill/Glare control (internal faceted louver, MH/PSMH only) V2 External visor for axial and horizontal lamp optics LV External visor/louwer for axial and horizontal lamp optics		

- 1 CSA certified
- 2 Remote head units, specify wattage and lamp type to be used: H for MH and S for HPS; Example: SLS100H-020
- 3 220,240V, 50 Hz in 1000 and 1500w MH only; All other wattages and sources consult factory
- 4 For wire gauge, replace first X with 6 - 16/3; 4 - 14/3; or 2 - 12/3; (NOTE: 120V 1500W units must use 14/3 or 12/3); For voltage replace second X with 1 - 120V; 2 - 208V; 3 - 240V; 4 - 277V; 5 - 480V; 6 - 347V
- 5 To denote voltage, replace X with 2 - 208V; 3 - 240V; 4 - 277V; 5 - 480V; 6 - 347V
- 6 Hull adds 4 lbs. to total weight - shipped separately except on N/M/W optics (assembled on unit)
- 7 Internal faceted louvers for beam type N/M/W only
- 8 N/M/W beam distributions not available in HPS; Luminaire shipped as completely assembled unit
- 9 Units not suitable for up-aiming
- 10 Lamp included
- 11 Specific wire gauge and wiring methods may be required by local or national codes; Consult local inspection agencies for details prior to ordering
- 12 Type 3 distribution not available in 1000w HPS
- 13 Beam distributions N, M & W only; Not available in remote yoke head unit
- 14 Limited aiming angles: 875w PSMH can only be aimed between 17 and 47 degrees below horizontal

Accessories (order separately)
See page 696.

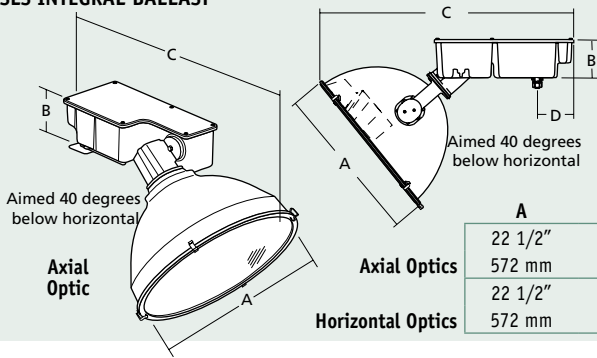


SLS Series Dimensions

SportsLiter Solutions

SPORTSLIGHTING

SLS INTEGRAL BALLAST



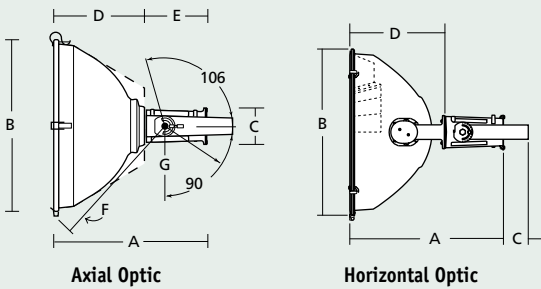
Horizontal Optic

Note 2.8 EPA per fixture

	A	B	C	D
Axial Optics	22 1/2"	5 1/4"	35 3/4"	
	572 mm	133 mm	908 mm	
Horizontal Optics	22 1/2"	5 1/4"	36 5/8"	5 1/4"
	572 mm	133 mm	930 mm	133 mm

Integral Luminaires	Weight	
	lbs	kg
METAL HALIDE		
Axial, 1000w	47.0	21.4
Axial, 1500w	50.0	22.8
Horizontal, 875w	50.0	22.8
Horizontal, 1000w	49.5	22.6
Horizontal, 1500w	52.5	23.9
HIGH PRESSURE SODIUM		
1000w	51.0	23.2

SLS REMOTE YOKE HEAD

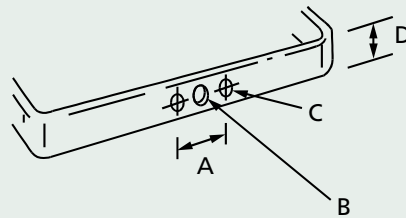


Remote Yoke Heads	Weight	
	lbs	kg
METAL HALIDE		
Axial, 1000/1500w	18.0	8.2
Horizontal, 1000/1500w	20.5	9.3

	A	B	C	D	E	F	G
Axial Optics	20 1/8"	22 1/2"	4 3/4"	12"	8 1/8"	18 7/8" R	9" R
	511 mm	572 mm	121 mm	305 mm	206 mm	479 mm	229 mm
Horizontal Optics	21"	22 1/2"	3 1/2"	13"			
	533 mm	572 mm	89 mm	330 mm			

Note 2.8 EPA per fixture

SLS REMOTE HEAD YOKE



A	B	C	D
3 1/8"	7/8" dia.	17/32" dia.	2"
79 mm	22 mm	14 mm	51 mm

