

# INSTRUCTIONS FOR INSTALLING AND SERVICING THE SLS SERIES GLARE AND SPILL CONTROL FLOODLIGHT

## GENERAL SAFETY INFORMATION

**WARNING!** Dangerous voltages exist within these fixtures and all precautions usually observed in handling high voltage equipment should be observed when replacing lamps, installing or otherwise servicing these fixtures.

## DO NOT AIM ABOVE HORIZONTAL!

**WARNING!** To reduce fire and shock hazards: Disconnect power before servicing. Install and maintain fixture to meet all applicable codes. Ensure the fixture and wiring are properly grounded. Read and follow all instructions, electrical data markers, lamp carton warnings and wiring labels before installing. Installation of fixture is to be performed by a qualified, licensed electrician only. The installer of this fixture is responsible for safe, secure mounting suitable for the application. Once fixture is installed, give these instructions to the equipment owner.

**CAUTION!** High temperature tempered glass sometimes ruptures spontaneously. Install to minimize hazard of falling diced glass.

## UNPACKING INSTRUCTIONS

While unpacking, it is important to verify the location of all parts before discarding any packaging materials.

## ASSEMBLY INSTRUCTIONS:

1. Open lens assembly.
2. Install lamp. Secure lamp with lamp end support wire form.
3. Close lens assembly.
4. Ensure the gasket is seated properly and snap the (4) latches over the reflector flange.

## MOUNTING INSTRUCTIONS: (See Figure 2)

This unit is supplied with a 3/4" or 5/8" bolt, nut, slit washer, and toothed washer for mounting to crossarm style (flat surface) mounting brackets. This bolt is captive but may be replaced with a longer, hex head bolt if required. A 5/8" bolt, S.A.E. 5 minimum or a 3/4" bolt, S.A.E. 2 minimum is required. A tenon adapter (Cat. No. 4024SLS) is available for pole top mounting.

Included with the ballast housing is a horizontal aiming plate (K) to be used only if FAST AIM aiming method will be utilized.

1. Use the aiming plate as a template and mark the center of the small hole on the crossarm (L). Note: Position the forward edge parallel to the crossarm mounting bracket.
2. Drill a .219" dia. hole through the steel crossarm at the location just marked. DO NOT drill through the aiming plate!
3. Using the supplied screw and nut, attach the aiming plate to the crossarm. When mounting the fixture on a wooden crossarm, use a large galvanized nail to attach the aiming plate.
4. Remove the nut (C), slit washer (B), and toothed washer (A) from the main fixture mounting bolt (M).
5. Secure the fixture to the crossarm by placing the main fixture mounting bolt through the toothed washer (A), horizontal aiming plate, and the hole in the crossarm.
6. Replace the slit washer (B) and nut (C) on the main fixture mounting bolt and tighten to 150 ft. lbs.

## MOUNTING NOTES:

- A. Ensure that the crossarm has adequate strength to support your desired number of fixtures.
- B. 5010 mounting brackets are available when obstructions will not allow center fixture mounting on three-fixture brackets.
- C. DO NOT mount fixtures directly to concrete.

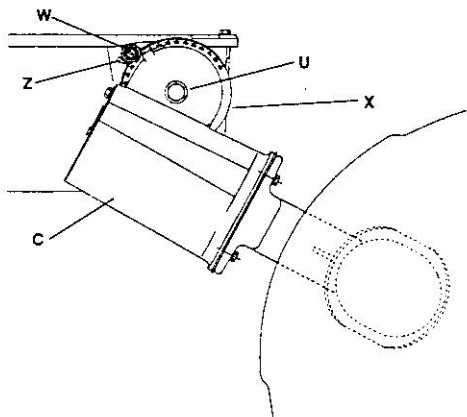


FIGURE 1

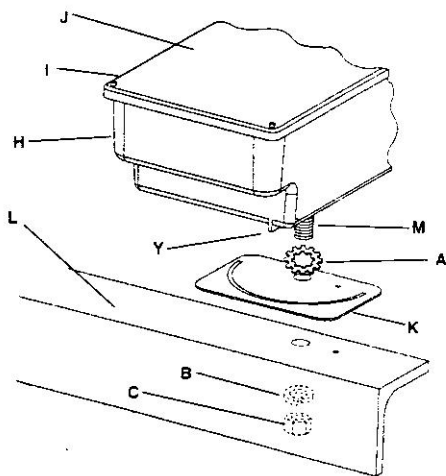


FIGURE 2



Hubbell Lighting, Inc.  
● A Subsidiary of Hubbell Incorporated  
2000 Electric Way  
Christiansburg, VA 24073-2500  
(540) 382-6111  
FAX (540) 382-1526

268-1118-9901

