

5010 CROSSARM BRACKET MOUNTING INSTRUCTIONS

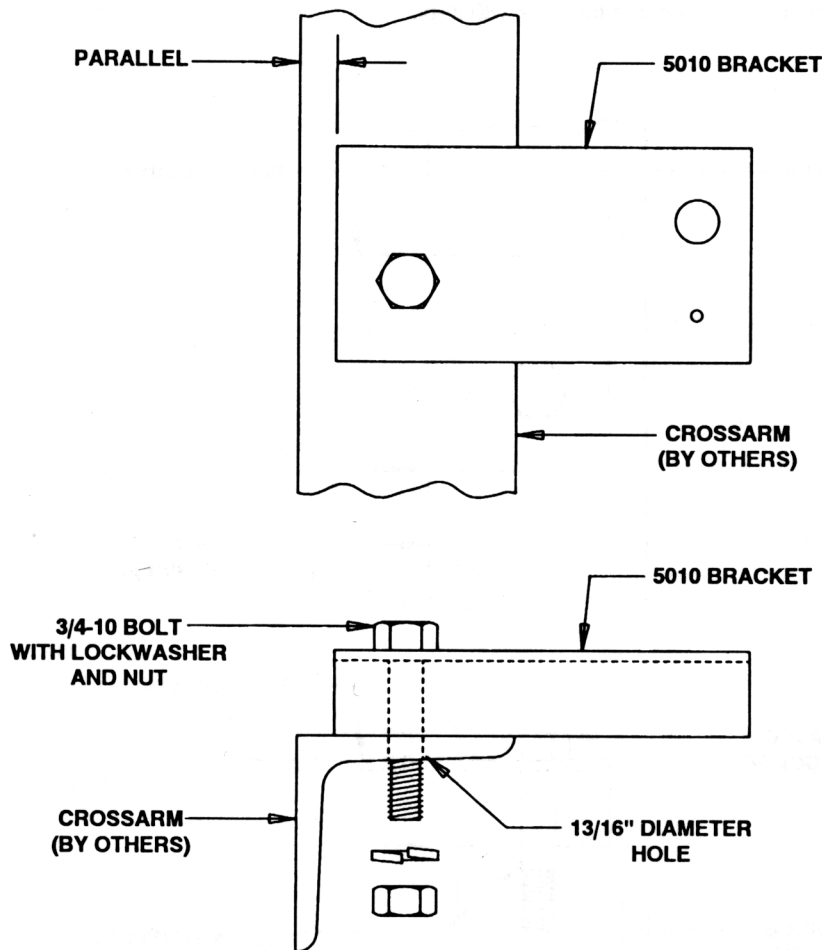
WARNING: To reduce the risk of injury: Install and maintain to meet applicable codes; ensure that all supporting structures are securely fastened before installing crossarm brackets and luminaires; make safety first.

IMPORTANT: The 5010 bracket is required for use with the SLS Sportsliter whenever a crossarm has an odd number of luminaires mounted on it. The 5010 bracket will be required for use with the center mounted luminaire only (to allow a wider range of lateral aiming).

5010 CROSSARM BRACKET INSTALLATION

1. Ensure that your crossarm has adequate strength to support your desired number of luminaires.
2. Drill a 13/16" diameter hole through the crossarm.
3. Secure the 5010 crossarm bracket to the crossarm with a 3/4-10 bolt, nut and lockwasher (provided by others). Minimum bolt and nut specification: ASTM A-307/SAE-Grade 2 low carbon steel. Tighten nut to 140 ft. lbs.
4. Attach SLS Sportsliter luminaire to the 5010 crossarm bracket with the 3/4-10 bolt, nut and lockwasher provided with the luminaire. Tighten the nut to 180 ft. lbs.

NOTE
When the 5010 bracket is used with other types of luminaires, the installer will need to provide an additional set of hardware to attach the luminaire yoke to the 5010 bracket. Use the same type of hardware as called for in step #3 above, and tighten nut to 180 ft. lbs.



NOTE
Quality and product improvement is a continuous program by Hubbell Lighting, Inc. Data in this bulletin is subject to change without notice.



Hubbell Lighting, Inc.
A Subsidiary of Hubbell Incorporated
2000 Electric Way
Christiansburg, VA 24073-2500
(540) 382-6111
FAX (540) 382-1526

268-0921-9901