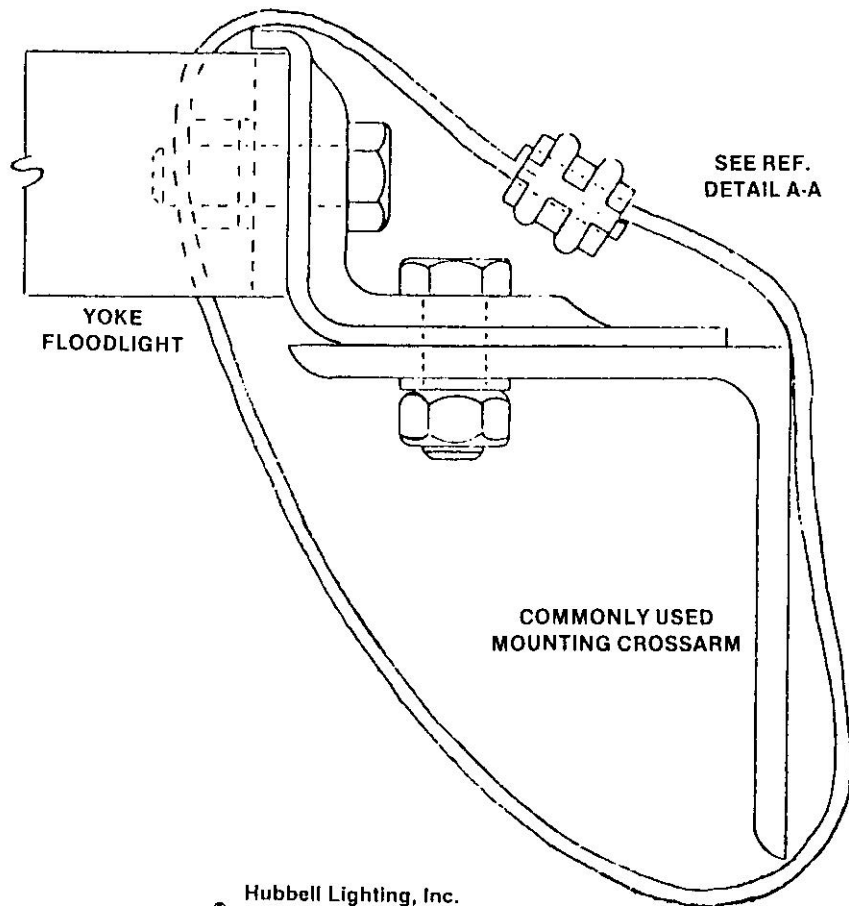
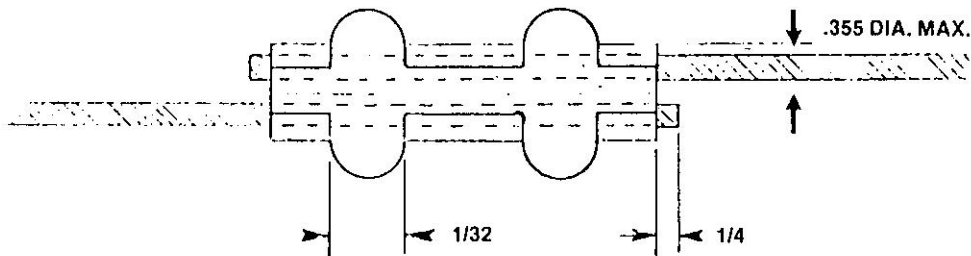


LUMINAIRE RETAINER CABLE ASSEMBLY INSTALLATION

D.L.M.C.

DETAIL A-A



STEPS:

1. Remove the sleeve and cable from the carton.
2. Pass cable through the floodlight yoke and around the mounting crossarm. (Example of this type of installation is shown on diagram).
3. Insert cable through sleeve from opposite ends, extending cut end approximately 1/4" through sleeve, see diagram.
4. Crimp sleeve per detail A-A.



Hubbell Lighting, Inc.
A Subsidiary of Hubbell Incorporated
2000 Electric Way
Christiansburg, VA 24073-2500
(703) 382-6111
FAX (703) 382-1526

268-0178-9908