



TEST NO. : HP-09414
CAT. NO. : SLTC-A1000H-HTxx

DATE: 6-19-2000

LUMINAIRE

SOCKET POS.:FIXED
REFLECTOR:ALUMINUM
SPEC/HAMTONE
ENCLOSURE:CLEAR, FLAT GLASS

LAMP

TYPE: 1000W MET. HAL.
ANSI: MH1000/U I.D.: PRORATED
ENVELOPE: BT 56 L.C.L.:9.5 INCHES
1 LAMP(S) at LUMENS/LAMP: 103400

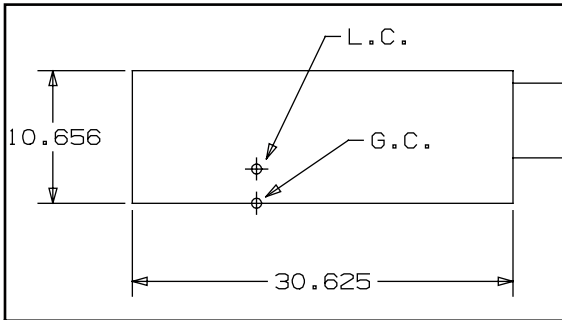
CLASSIFICATION

DISTRIBUTION: N/A
TYPE: III-MOD
CONTROL: FULLCUTOFF

GENERAL

TEST DISTANCE: 36 FEET

To approximate performance for similar lamps with different Lumens, multiply Lumens, Lux and Footcandles by this ratio:



LIGHT FLUX VALUES

Table with 3 columns: Direction, Lumens, Percent of Lamp. Rows include Downward Streetside, Downward HouseSide, Upward Streetside, Upward HouseSide, and Total.

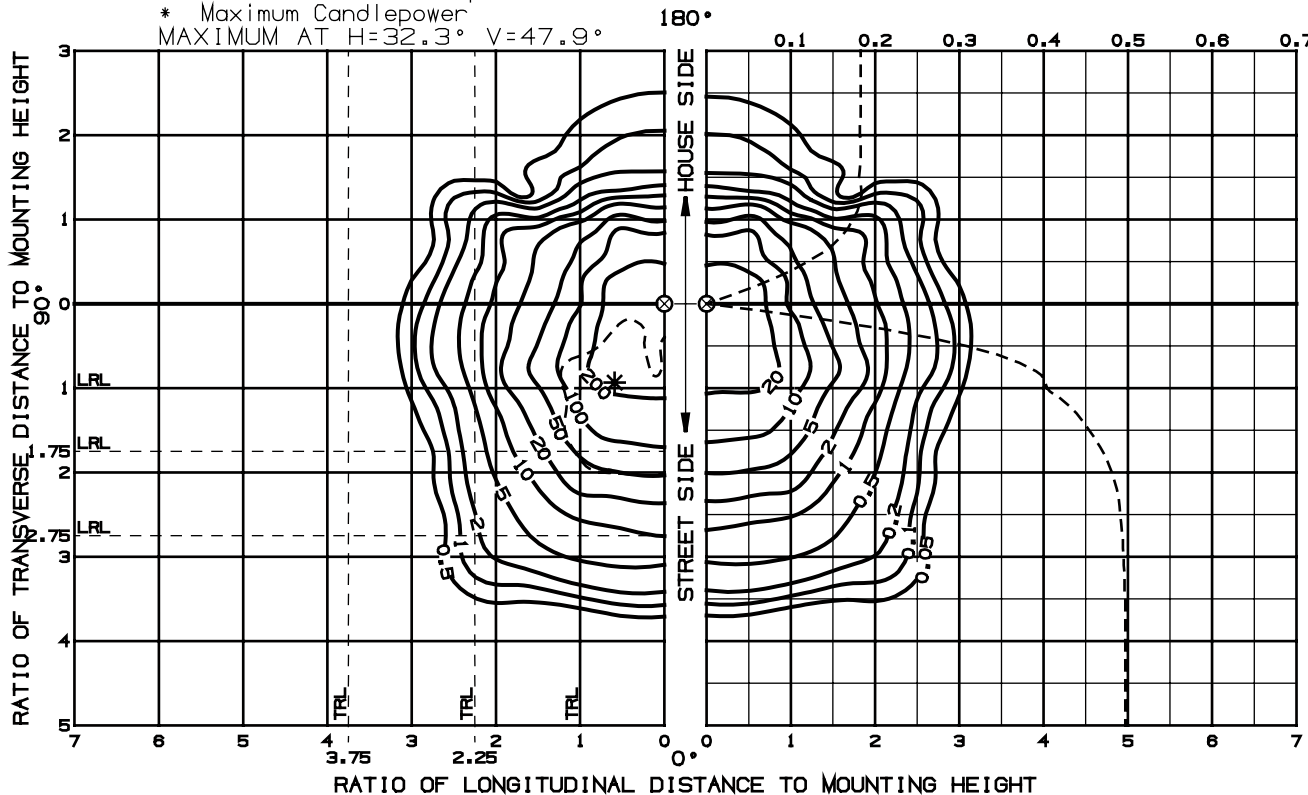
RATIO = (SELECTED LAMP LUMENS) / 103400

ISOLUX DIAGRAM

MOUNTING HEIGHT: 6.71 METERS
-----Half Maximum Candlepower Trace
* Maximum Candlepower
MAXIMUM AT H=32.3° V=47.9°

ISOFOOTCANDLE DIAGRAM

MOUNTING HEIGHT: 22 FEET
-----Coefficient of Utilization Curves



MOUNTING HEIGHT CORRECTION FACTORS table with columns for Mounting Height (Feet/Meters) and Factor.

TESTED TO CURRENT IES AND NEMA STANDARDS UNDER STABILIZED LABORATORY CONDITIONS. VARIOUS OPERATING FACTORS CAN CAUSE DIFFERENCES BETWEEN LAB DATA AND ACTUAL FIELD MEASUREMENTS.

cept in full, without the written approval of Hubbell Lighting's Manager of Certification and testing. This NVLAP logo does not imply endorsement by NVLAP or any agency of the U. S. Government and this account must not be used to claim such endorsement.

Tested By: R. E. Horan, M. I. E. S.

Approved By: Mawm J. Rhodes