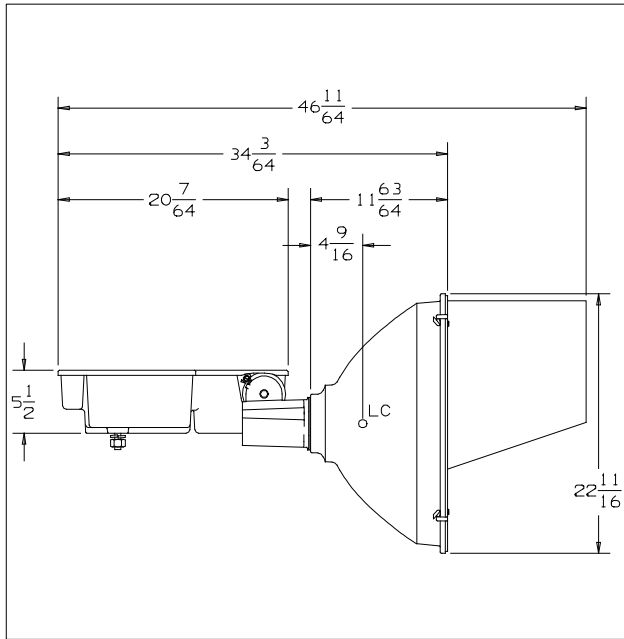




CAT NO.: SLS1000Hx-x3x-V2

TEST NUMBER: HP-10148



COVER GLASS: CLEAR, PLAIN, FLAT
REFLECTOR
SHAPE

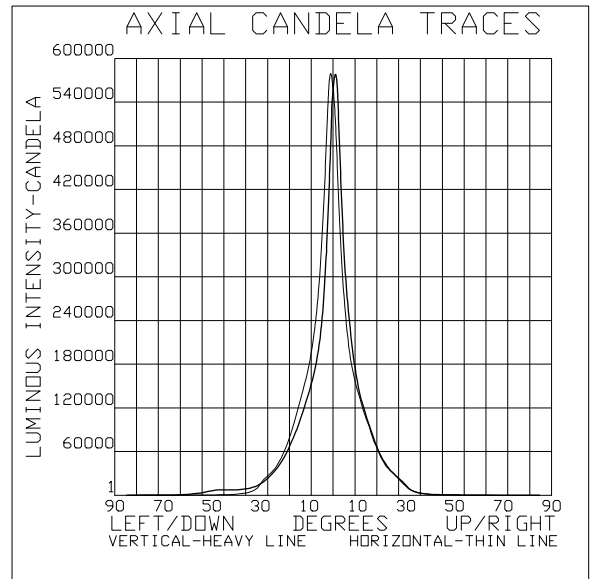
FRONT: AS SPUN NEMA 3
REAR: AS SPUN NEMA 3

MATERIAL: ALUMINUM
ALLOY: 3002
FINISH: SPECULAR

REFLECTANCE
TOTAL: 82.2%
SPECULAR: 83.2%

*** LAMP DATA ***
DESIGNATION: MVR1000/U
SOURCE: HALIDE ARC
LUMEN REFERENCE: 108000.
BULB: BT56, CLEAR
VOLTAGE: 249. volts
POWER: 1000. watts
LIGHT CENTER LENGTH: 9.5 INCHES
BASE: MOGUL SCREW
SOCKET SPACER: NONE

*** PERFORMANCE ***
TYPE: 3 H X 3 V
MAXIMUM CANDELA: 598348
LOCUS OF MAX. CD -0.6H X 1.0V
AVERAGE OF 10 HIGHEST: 457838
BEAM SPREAD (AT 50% MAX. CD)
DEG. HORIZONTAL: 10.0
DEG. VERTICAL: 8.6
BEAM LUMENS: 7156
BEAM EFFICIENCY: 6.6%
FIELD SPREAD (AT 10% MAX. CD)
DEG. HORIZONTAL: 39.3
DEG. VERTICAL: 37.8
FIELD LUMENS: 48620
FIELD EFFICIENCY: 45.0%
SPILL LIGHT LUMENS: 25255
TOTAL LUMENS: 73875
TOTAL EFFICIENCY: 68.4%
TEST DISTANCE: 60.0



SPECIAL CONDITIONS:
CURRENT PRODUCTION (7/2004) REFLECTOR WITH 12" DEEP BLACK VISOR