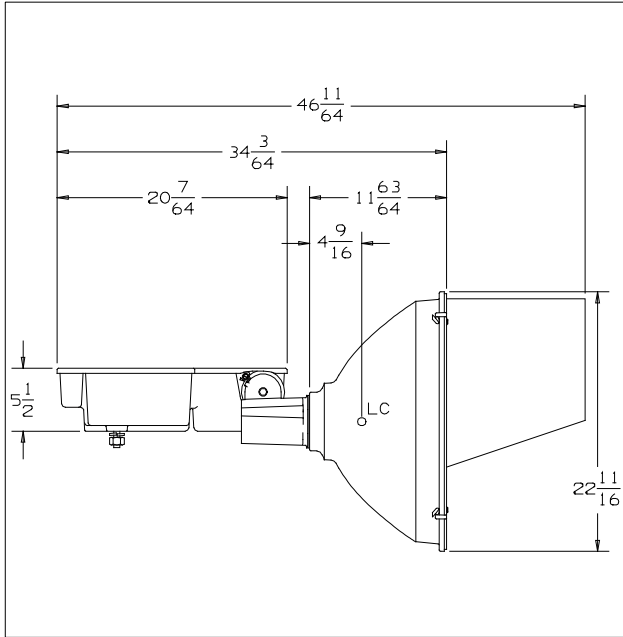




CAT NO.: SLS1000Hx-x2x-V2

TEST NUMBER: HP-10144

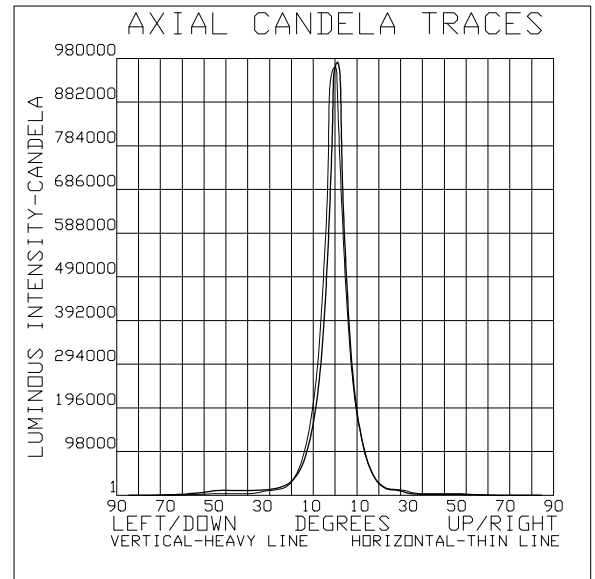


COVER GLASS: CLEAR, PLAIN, FLAT
REFLECTOR
SHAPE

FRONT: AS SPUN NEMA 2
REAR: AS SPUN NEMA 2
MATERIAL: ALUMINUM
ALLOY: 3002
FINISH: SPECULAR
REFLECTANCE
TOTAL: 81.0%
SPECULAR: 79.8%

*** LAMP DATA ***
DESIGNATION: MVR1000/U
SOURCE: HALIDE ARC
LUMEN REFERENCE: 108000.
BULB: BT56, CLEAR
VOLTAGE: 248. volts
POWER: 1000. watts
LIGHT CENTER LENGTH: 9.5 INCHES
BASE: MOGUL SCREW
SOCKET SPACER: NONE

*** PERFORMANCE ***
TYPE: 2 H X 2 V
MAXIMUM CANDELA: 984379
LOCUS OF MAX. CD -0.1H X 0.7V
AVERAGE OF 10 HIGHEST: 736469
BEAM SPREAD (AT 50% MAX. CD)
DEG. HORIZONTAL: 9.1
DEG. VERTICAL: 8.4
BEAM LUMENS: 11658
BEAM EFFICIENCY: 10.8%
FIELD SPREAD (AT 10% MAX. CD)
DEG. HORIZONTAL: 25.0
DEG. VERTICAL: 24.1
FIELD LUMENS: 37828
FIELD EFFICIENCY: 35.0%
SPILL LIGHT LUMENS: 30590
TOTAL LUMENS: 68417
TOTAL EFFICIENCY: 63.3%
TEST DISTANCE: 60.0



SPECIAL CONDITIONS:
CURRENT PRODUCTION (7/2004) REFLECTOR WITH 12" DEEP BLACK VISOR